



企 业 简 介

Company Profile

瑞安市科密汽车制动有限公司是由瑞立集团旗下广州市科密汽车电子控制技术股份有限公司投资的全资子公司。其前身为瑞立集团汽车制动电子科技事业部，是专业从事汽车电涡流缓速器、汽车底盘测功机电涡流机等产品的技术研发、生产、销售与服务一体的科技型企业，公司历经十多年的发展，已成为国内商用车载重汽车电涡流缓速器的龙头企业，并先后荣获“国家高新技术企业”“浙江省科技型中小企业”和“温州市科技创新型企业”。公司通过了国际质量管理体系 ISO/TS16949:2009 认证。公司产品已为中国一汽集团、陕汽重卡、东风汽车、郑州宇通、厦门金龙、金华青年、扬州亚星等 30 多家国内主流汽车厂配套。同时为多家矿用专用车、危险品运输车（油罐车、气罐车、液罐车）等特种汽车配套，2007 年还通过了解放军总装备部军用载重运输车辆应用试验，成为军用载重运输车辆缓速器独家供应商。并与国内各大城市公交集团合作，提供优质公交车用电涡流缓速器产品。

Ruian Kormee Automobile braking Co.,Ltd. is a wholly owned subsidiary of Guangzhou Kormee Auto Electronic Control Technology Co.,Ltd., a company controlled by Ruili Group. Its predecessor is Ruili group science and technology of automobile braking electronic department, is specialized in automotive Electronic Retarder, vehicle chassis dynamometer with eddy current machine and other products of the technology research and development, production, sales and service of integrated science and technology enterprises, company after ten years of development, has become the domestic commercial truck of eddy current retarder leading enterprises, and has won the “The national high and new technology enterprises”, “SMEs in Zhejiang Province” and “The innovation of science and technology enterprises

in Wenzhou City”. The company passed the ISO/TS16949:2009 International quality management system certification. The company has been successfully supplying service to more than 30 OE Manufacturers in China, including FAW, Shanxi Automobile, Dongfeng, Zhengzhou Yutong, Xiamen Kinglong, Jinhua Youngman and Yangzhou ASI STAR. At the same time for many mine special purpose vehicle, dangerous goods transport vehicles and other special automobile accessory. In 2007, the company passed the heavy duty transportation vehicle testing of PLA General Armament Department, becoming the exclusive Retarder supplier of them. Meanwhile, it has established a wide cooperation with city bus companies all around China by supplying them with reliable and good quality Electronic Retarder products.



目 录

Contents

01

KMX 系列电涡流缓速器
KMX SERIES RETARDER

03

KMT 系列电涡流缓速器
KMT SERIES RETARDER

06

KMZ 系列电涡流缓速器
KMZ SERIES RETARDER

15

控制系统
CONTROL SYSTEMS

20

控制系统附件
CONTROL SYSTEMS ACCESSORY

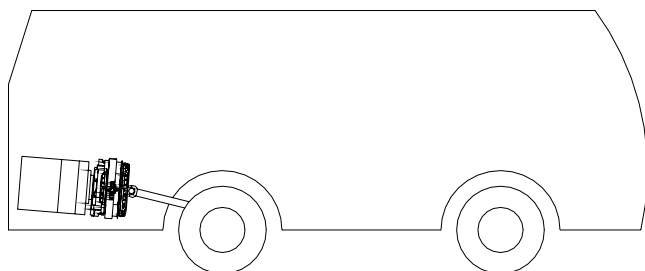


- 制动扭矩大；
 - 实现无接触式制动，使用寿命长；
 - 重量轻
 - 安装空间小
 - 最佳的冷却空气流通设计，通风量大，冷却效果很好
- Brake torque large
 - Life is longer
 - Light weight
 - A small install space
 - Cooling effect good

安装方式 INSTALLATION

KMX 系列缓速器扭矩 2400~1500N.m 的产品一般用于大、中型客车，扭矩 1400N.m 及以下的产品一般用于中巴车。

The KMX series retarder with 2400~1500N.m torque suit for passenger car, the torque lesser than 1400N.m suit for microbus

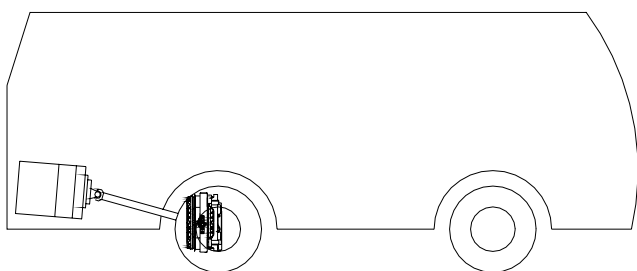
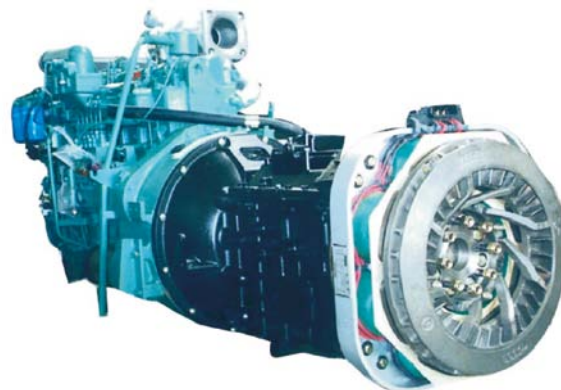


安装在后置变速箱

INSTALL REAR GEARBOX

客车或中巴车

PASSENGER CAR OR MICROBUS



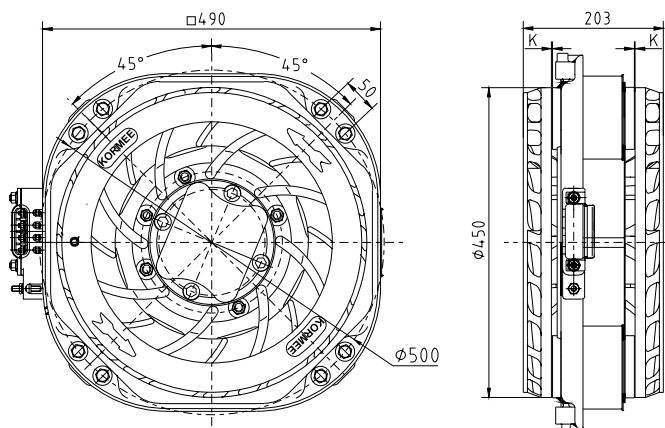
安装在驱动桥

INSTALL REAR TRANSAXLE

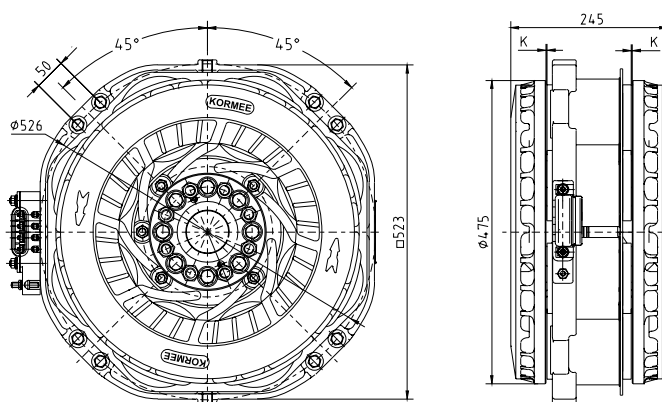
客车或中巴车

PASSENGER CAR OR MICROBUS




KMX14 系列电涡流缓速器 KMX14 SERIES RETARDERS

型号 NO.	最大扭矩 TORQUE MAX	电压 VOLTS	最大电流 CURRENT MAX	产品总重 RETARDER WEIGHT	气隙 K AIR GAP	适装车辆 VEHICLE GVW	外形尺寸 DIMENSION DxDxH
KMX12	1200N.m	24V	85A	120Kg	1.1~1.4mm	8~13T	490x490x203mm
KMX14	1400N.m	24V	99A	130Kg	1.1~1.4mm	9~15T	490x490x203mm


KMX19 系列电涡流缓速器 KMX19 SERIES RETARDERS

型号 NO.	最大扭矩 TORQUE MAX	电压 VOLTS	最大电流 CURRENT MAX	产品总重 RETARDER WEIGHT	气隙 K AIR GAP	适装车辆 VEHICLE GVW	外形尺寸 DIMENSION DxDxH
KMX15	1500N.m	24V	85A	160Kg	1.2~1.5mm	12~16T	523x523x245mm
KMX17	1700N.m	24V	97A	170Kg	1.2~1.5mm	12~18T	523x523x245mm
KMX19	1900N.m	24V	112A	180Kg	1.2~1.5mm	14~20T	523x523x245mm
KMX22	2200N.m	24V	126A	200Kg	1.2~1.5mm	16~24T	523x523x245mm
KMX24	2400N.m	24V	132A	210Kg	1.2~1.5mm	16~26T	523x523x245mm



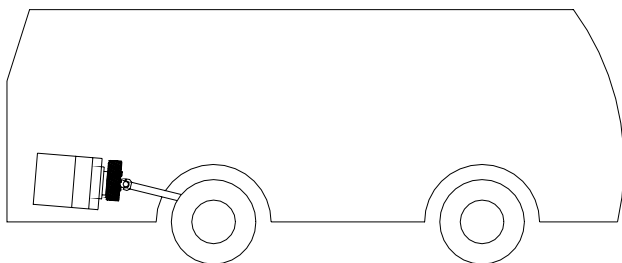
- 制动扭矩大；
- 实现无接触式制动，使用寿命长；
- 重量轻
- 安装空间小

- Brake torque large
- Life is longer
- Light weight
- A small install space

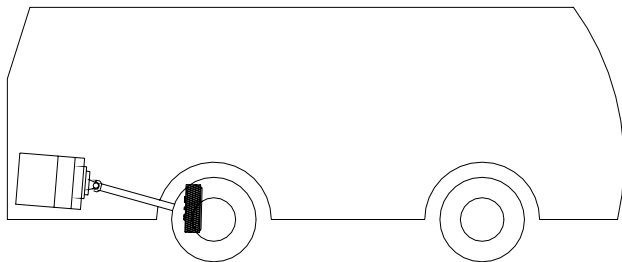
安装方式 INSTALLATION

KMT 系列产品一般用于城市公交。

The KMT series retarder suit for city bus.

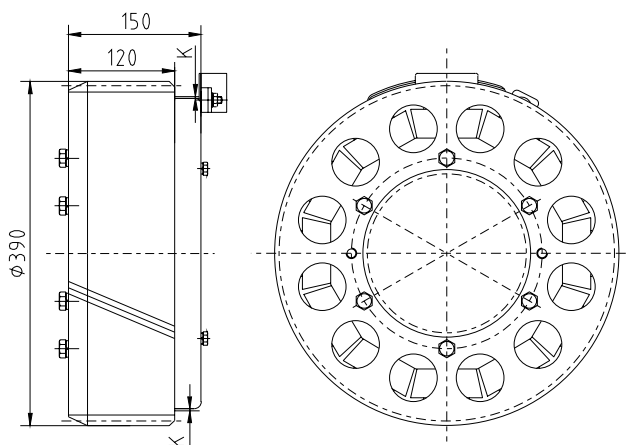


安装在后置变速箱
INSTALL REAR GEARBOX

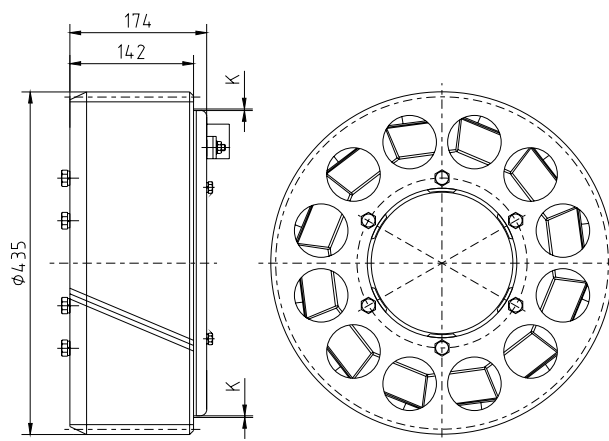


安装在驱动桥
INSTALL REAR TRANSAXLE

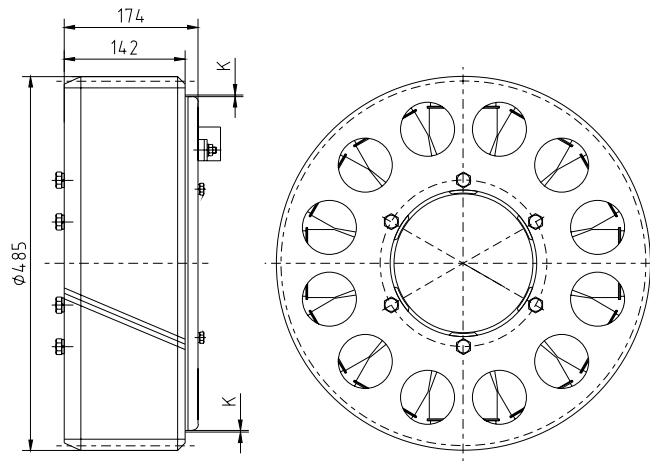



KMT07 系列电涡流缓速器 KMT07 SERIES RETARDERS

型号 NO.	最大扭矩 TORQUE MAX	电压 VOLTS	最大电流 CURRENT MAX	产品总重 RETARDER WEIGHT	气隙K AIR GAP	适装车辆 VEHICLE GVW	外形尺寸 DIMENSION DxHxW
KMT05	500N.m	24V	56A	52Kg	0.8~1.1mm	4~6T	Φ390x150mm
KMT06	600N.m	24V	65A	54Kg	0.8~1.1mm	5~7T	Φ390x150mm
KMT07	700N.m	24V	75A	56Kg	0.8~1.1mm	5~8T	Φ390x150mm


KMT11 系列电涡流缓速器 KMT11 SERIES RETARDERS

型号 NO.	最大扭矩 TORQUE MAX	电压 VOLTS	最大电流 CURRENT MAX	产品总重 RETARDER WEIGHT	气隙K AIR GAP	适装车辆 VEHICLE GVW	外形尺寸 DIMENSION DxHxW
KMT09	900N.m	24V	80A	68Kg	0.8~1.1mm	7~10T	Φ435x174mm
KMT11	1100N.m	24V	70A	70Kg	0.8~1.1mm	8~13T	Φ435x174mm
KMT12	1200N.m	24V	73A	72Kg	0.8~1.1mm	8~14T	Φ435x174mm



KMT15 系列电涡流缓速器 KMT15 SERIES RETARDERS

型号 NO.	最大扭矩 TORQUE MAX	电压 VOLTS	最大电流 CURRENT MAX	产品总重 RETARDER WEIGHT	气隙K AIR GAP	适装车辆 VEHICLE GVW	外形尺寸 DIMENSION DxHxW
KMT13	1300N.m	24V	103A	98Kg	0.8~1.1mm	9~14T	Φ485x174mm
KMT15	1500N.m	24V	109A	102Kg	0.8~1.2mm	10~16T	Φ485x174mm

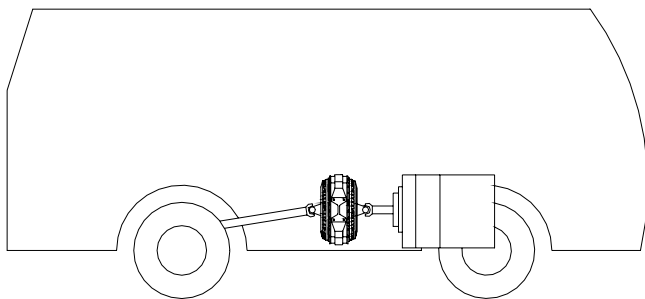


- 装有自润滑轴承，终身免维修
 - 缓速器中采用优质润滑脂，是一般润滑脂寿命的 5 倍
 - 制动扭矩大
 - 实现无接触式制动，使用寿命长
 - 最佳的冷却空气流通设计，通风量大，冷却效果很好
- Self-lubricating bearing
 - Grease life is 5 times than Common grease
 - Brake torque large
 - Life is longer Cooling effect good

安装方式 INSTALLATION

KMZ 系列缓速器扭矩 3800~2500N.m 的产品一般用于重型卡车，扭矩 2200~1700N.m 的产品一般用于客车和中型卡车，扭矩 1200N.m 以下的产品一般用于中巴车和轻型卡车。

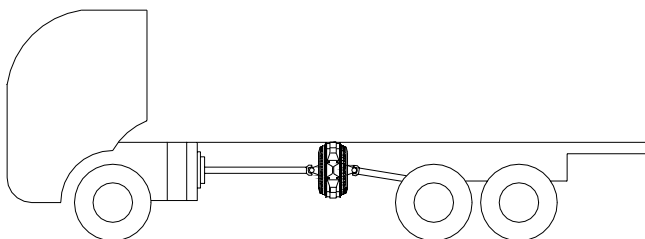
The KMZ series retarder with 3800~2500N.m torque suit for motor truck, with the 2200~1700N.m torque suit for passenger car, the torque lesser than 1200N.m suit for microbus .



安装在传动轴中间
前置发动机的
客车或中巴车

INSTALL MID CHASSIS

PASSENGER CAR OR MICROBUS

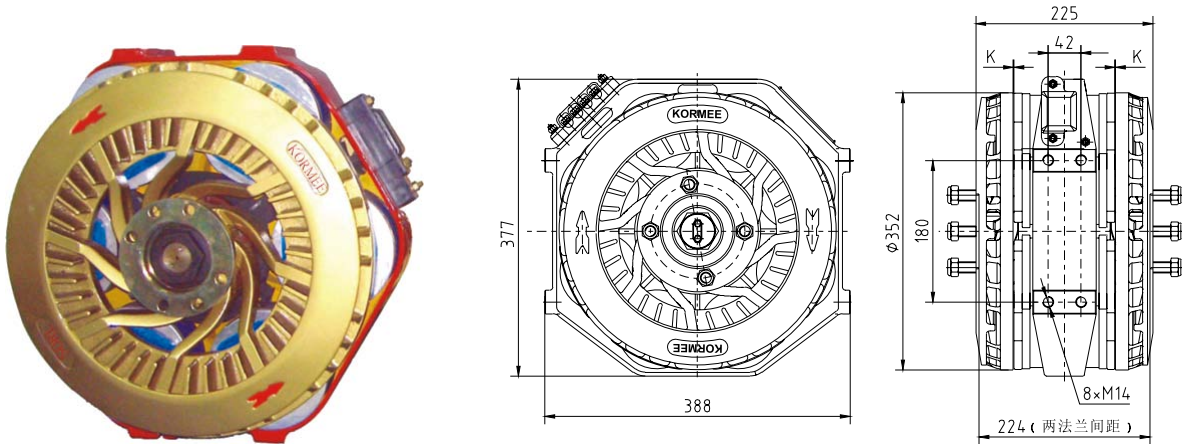


安装在传动轴中间
载重卡车

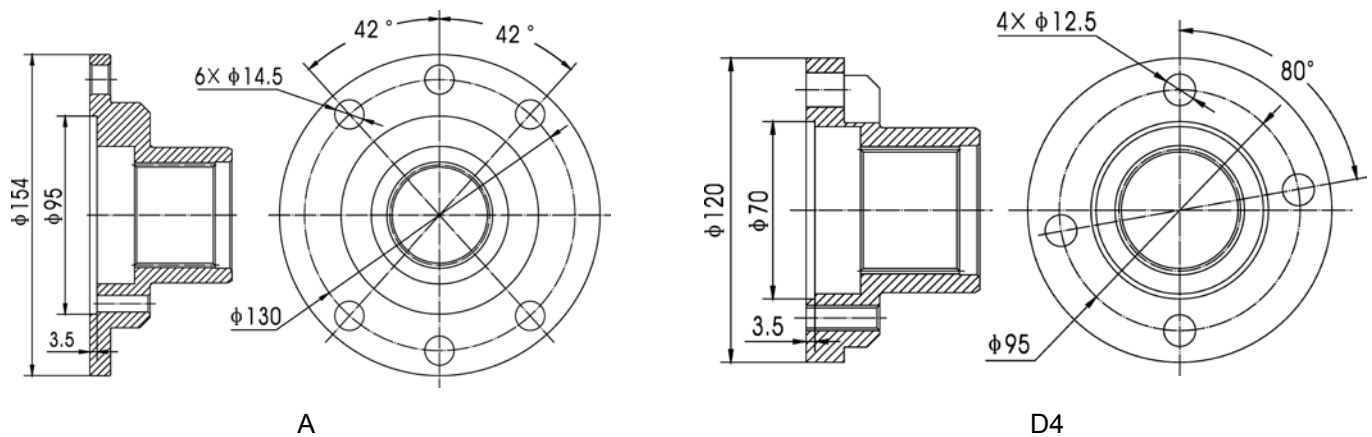
INSTALL MID CHASSIS

MOTOR TRUCK

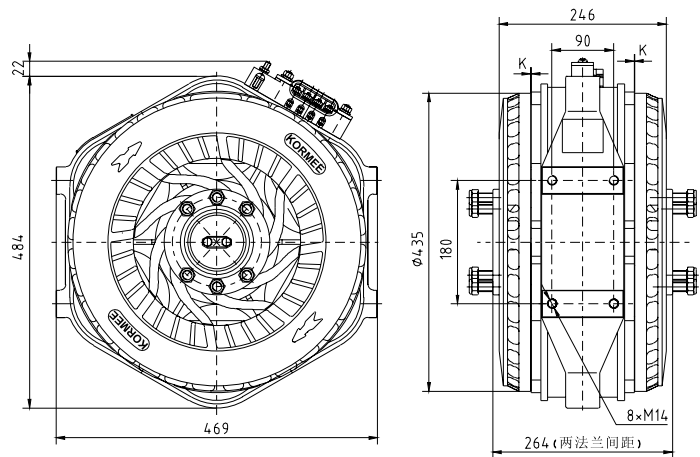



KMZ05 系列电涡流缓速器 KMZ05 SERIES RETARDERS

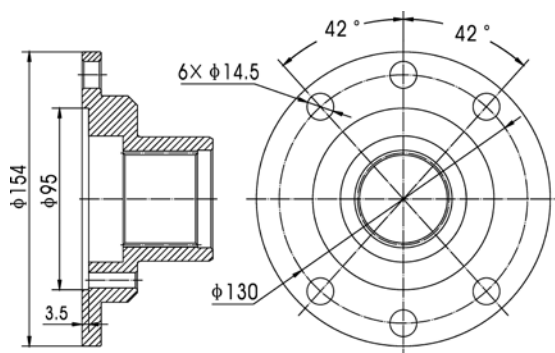
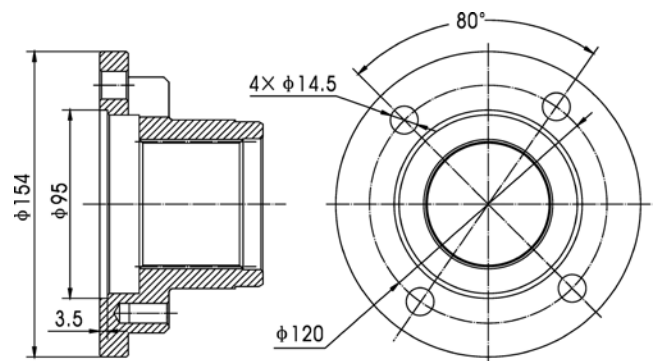
型号 NO.	最大扭矩 TORQUE MAX	电压 VOLTS	最大电流 CURRENT MAX	产品总重 RETARDER WEIGHT	气隙 K AIR GAP	适装车辆 VEHICLE GWV	外形尺寸 DIMENSION DxHxW
KMZ05	500N.m	24V	50A	88Kg	0.8~1.1mm	4~6T	388x377X225mm
KMZ07	700N.m	24V	67A	98Kg	0.8~1.1mm	5~7T	388x377X225mm



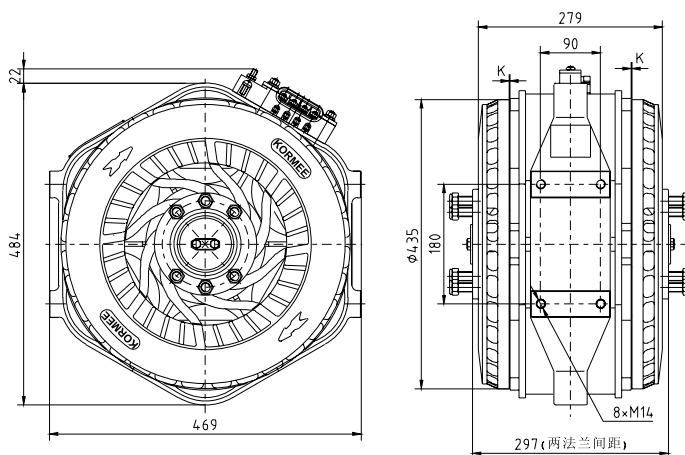
型号 NO.	法兰类型 FLANGE TYPE	适用缓速器 APPLICATION
3524 105 209 1	A	KMZ05/KMZ07
3524 105 208 1	D4	KMZ05/KMZ07


KMZ09 系列电涡流缓速器 KMZ09 SERIES RETARDERS

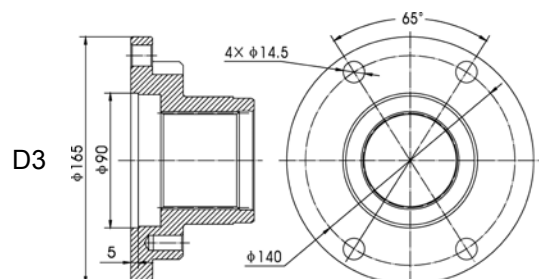
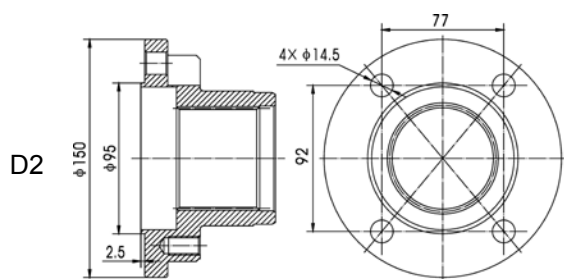
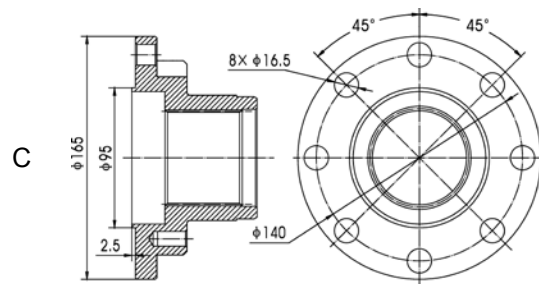
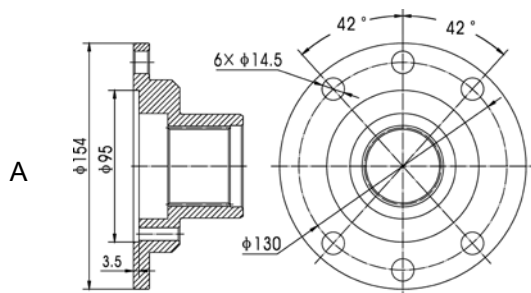
型号 NO.	最大扭矩 TORQUE MAX	电压 VOLTS	最大电流 CURRENT MAX	产品总重 RETARDER WEIGHT	气隙 K AIR GAP	适装车辆 VEHICLE GVW	外形尺寸 DIMENSION DxHxW
KMZ09	900N.m	24V	65A	120Kg	0.9~1.2mm	6~9T	469x484x246mm
KMZ12	1200N.m	24V	108A	130Kg	0.9~1.2mm	8~13T	469x484x246mm


A

D1

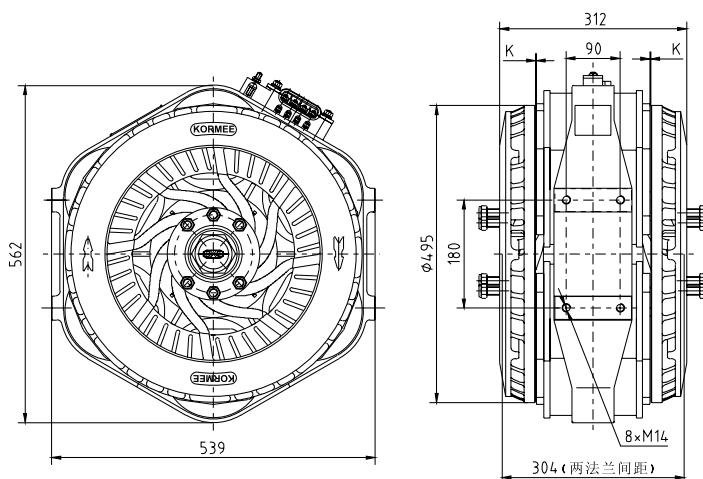
型号 NO.	法兰类型 FLANGE TYPE	适用缓速器 APPLICATION
3524 109 208 1	A	KMZ09/KMZ12/KMZ14
3524 109 209 1	D1	KMZ09/KMZ12/KMZ14


KMZ14 系列电涡流缓速器 KMZ14 SERIES RETARDERS

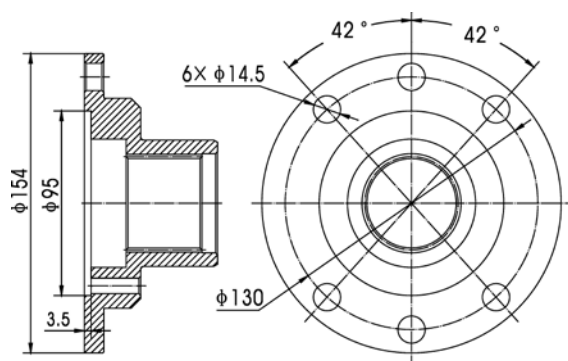
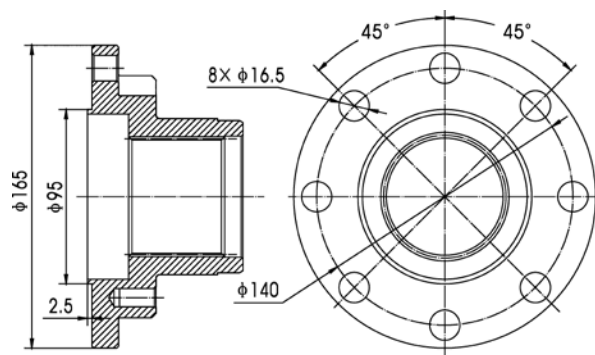
型号 NO.	最大扭矩 TORQUE MAX	电压 VOLTS	最大电流 CURRENT MAX	产品总重 RETARDER WEIGHT	气隙 K AIR GAP	适装车辆 VEHICLE GVW	外形尺寸 DIMENSION DxDxH
KMZ14	1400N.m	24V	106A	160Kg	0.9~1.2mm	9~15T	469x484x279mm



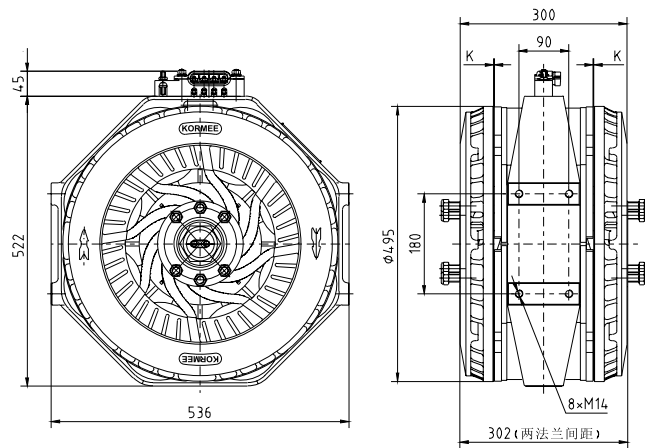
型号 NO.	法兰类型 FLANGE TYPE	适用缓速器 APPLICATION
3524 109 208 1	A	KMZ09/KMZ12/KMZ14
3524 114 204 1	C	KMZ09/KMZ12/KMZ14
3524 114 206 1	D2	KMZ09/KMZ12/KMZ14
3524 114 205 1	D3	KMZ09/KMZ12/KMZ14


KMZ19 系列电涡流缓速器 KMZ19 SERIES RETARDERS

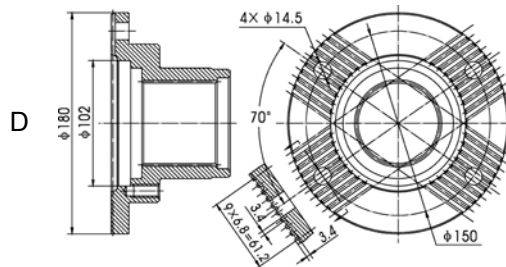
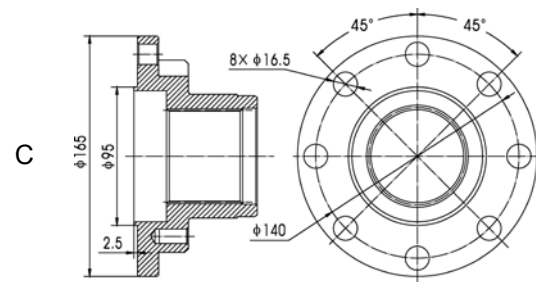
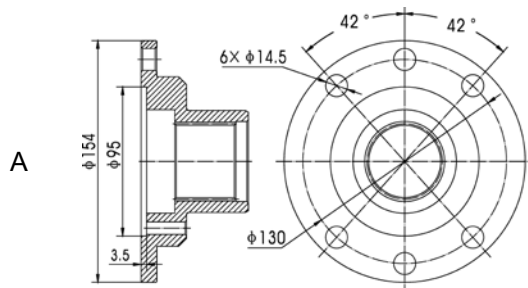
型号 NO.	最大扭矩 TORQUE MAX	电压 VOLTS	最大电流 CURRENT MAX	产品总重 RETARDER WEIGHT	气隙 K AIR GAP	适装车辆 VEHICLE GVW	外形尺寸 DIMENSION DxHxW
KMZ17	1700N.m	24V	95A	210Kg	1.1~1.4mm	12~18T	539x562x312mm
KMZ19	1900N.m	24V	110A	220Kg	1.1~1.4mm	14~20T	539x562x312mm


A

C

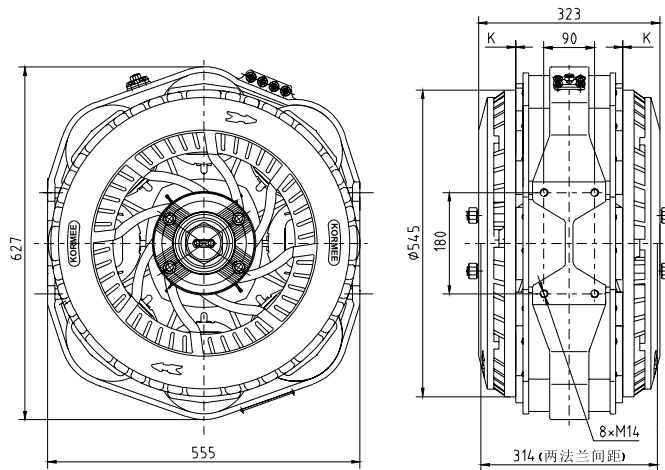
型号 NO.	法兰类型 FLANGE TYPE	适用缓速器 APPLICATION
3524 119 205 1	A	KMZ17/KMZ19
3524 119 206 1	C	KMZ17/KMZ19


KMZ22 系列电涡流缓速器 KMZ22 SERIES RETARDERS

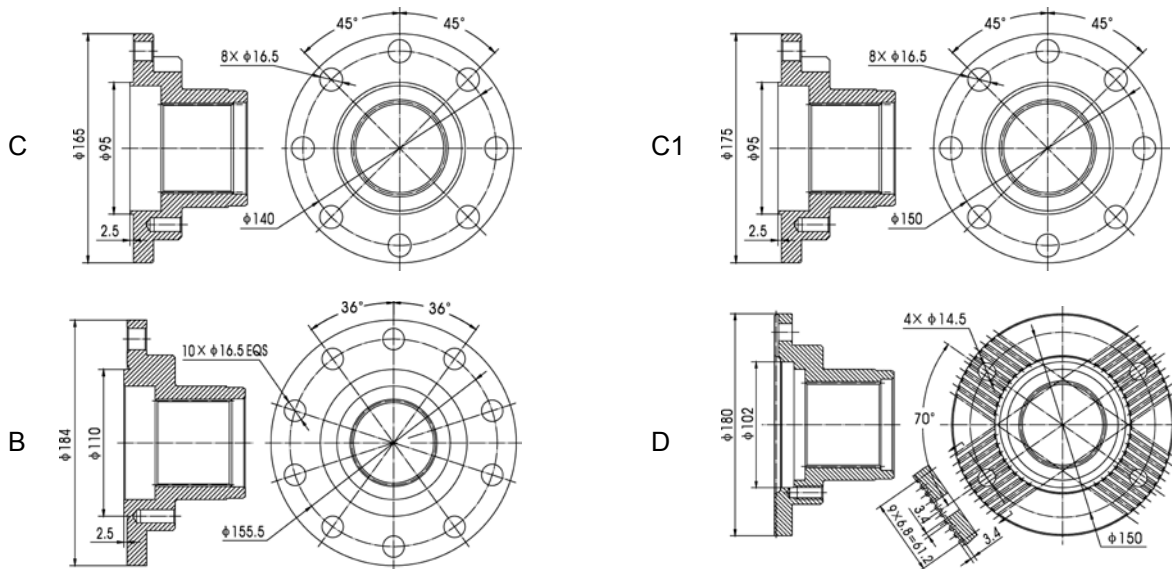
型号 NO.	最大扭矩 TORQUE MAX	电压 VOLTS	最大电流 CURRENT MAX	产品总重 RETARDER WEIGHT	气隙 K AIR GAP	适装车辆 VEHICLE GVW	外形尺寸 DIMENSION DxDxHxW
KMZ22	2200N.m	24V	126A	240Kg	1.2~1.5mm	16~24T	536x522x300mm
KMZ23	2300N.m	24V	142A	240Kg	1.2~1.5mm	18~26T	536x522x300mm



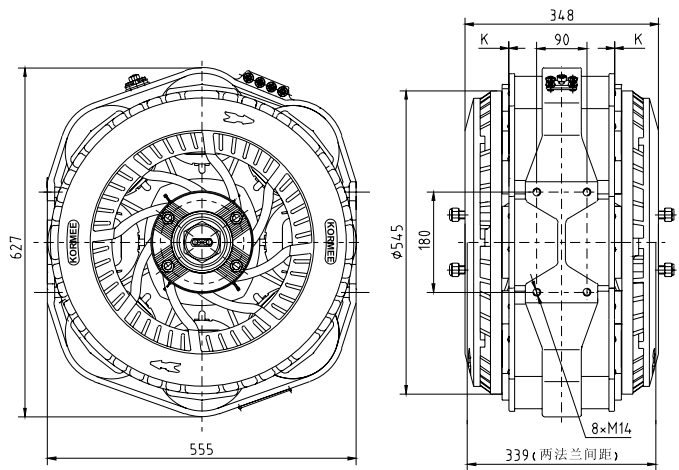
型号 NO.	法兰类型 FLANGE TYPE	适用缓速器 APPLICATION
3524 122 202 1	A	KMZ22/KMZ23
3524 122 203 1	C	KMZ22/KMZ23
3524 122 204 1	D	KMZ22/KMZ23


KMZ28 系列电涡流缓速器 KMZ28 SERIES RETARDERS

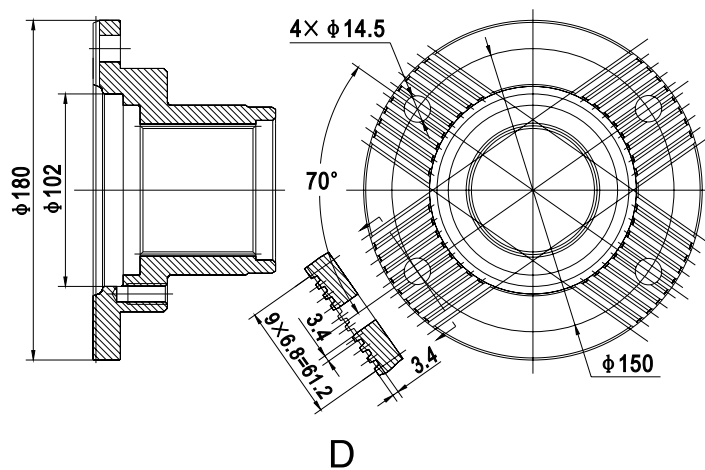
型号 NO.	最大扭矩 TORQUE MAX	电压 VOLTS	最大电流 CURRENT MAX	产品总重 RETARDER WEIGHT	气隙K AIR GAP	适装车辆 VEHICLE GVW	外形尺寸 DIMENSION DxHxW
KMZ25	2500N.m	24V	135A	275Kg	1.3~1.6mm	18~28T	555x627x323mm
KMZ28	2800N.m	24V	150A	290Kg	1.3~1.6mm	20~35T	555x627x323mm
KMZ30	3000N.m	24V	160A	295Kg	1.3~1.6mm	25~40T	555x627x323mm



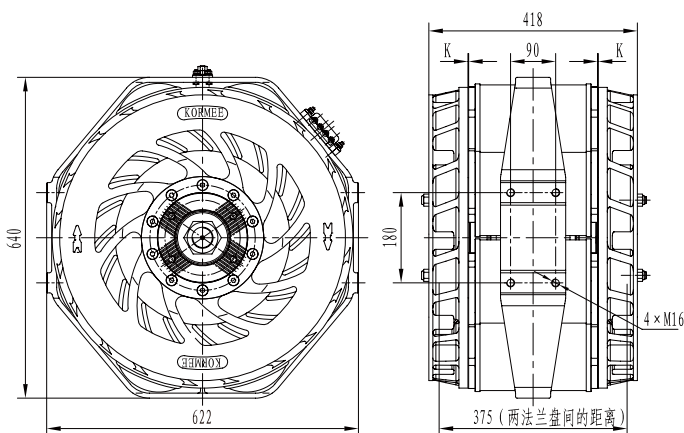
型号 NO.	法兰类型 FLANGE TYPE	适用缓速器 APPLICATION
3524 128 244 1	C	KMZ25/KMZ28/KMZ30
3524 128 248 1	C1	KMZ25/KMZ28/KMZ30
3524 128 246 1	B	KMZ25/KMZ28/KMZ30
3524 128 247 1	D	KMZ25/KMZ28/KMZ30


KMZ33 系列电涡流缓速器 KMZ33 SERIES RETARDERS

型号 NO.	最大扭矩 TORQUE MAX	电压 VOLTS	最大电流 CURRENT MAX	产品总重 RETARDER WEIGHT	气隙 K AIR GAP	适装车辆 VEHICLE GVW	外形尺寸 DIMENSION D x H x W
KMZ33	3300N.m	24V	165A	310Kg	1.3~1.7mm	32~45T	555x627x348mm

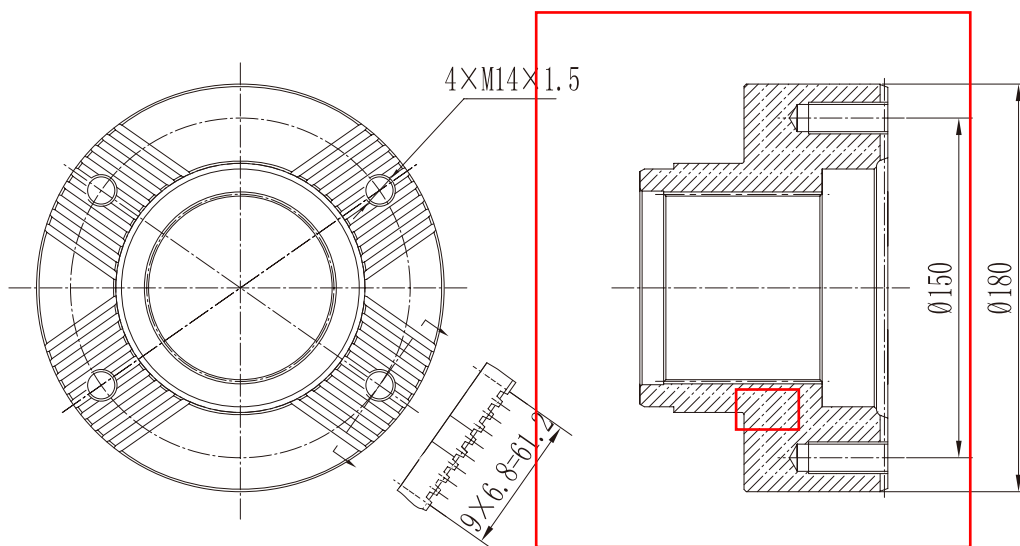


型号 NO.	法兰类型 FLANGE TYPE	适用缓速器 APPLICATION
3524 133 205 1	D	KMZ33

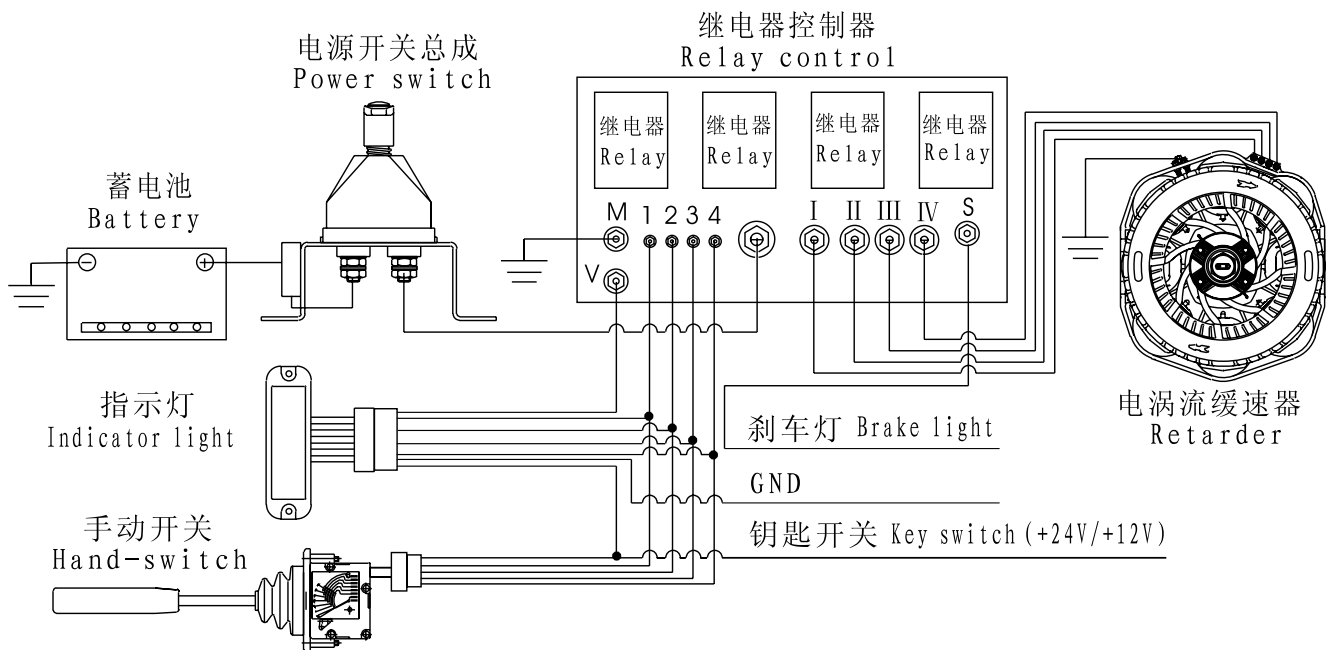
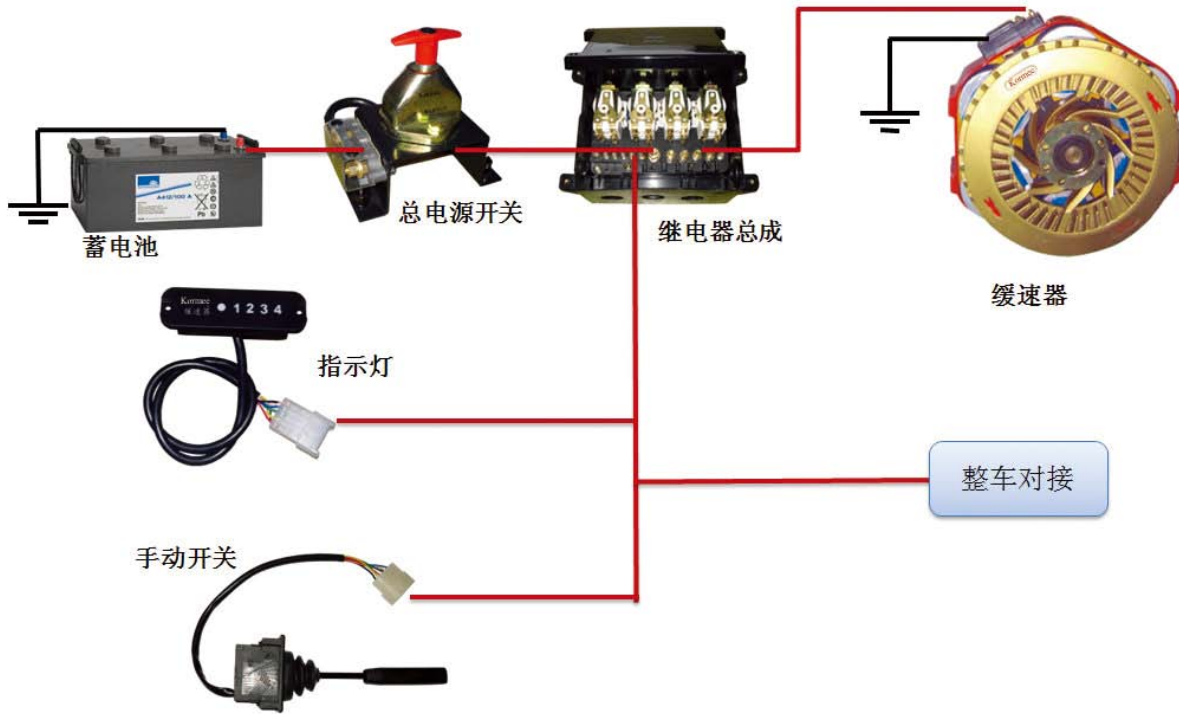


KMZ38 系列电涡流缓速器 KMZ38 SERIES RETARDERS

型号 NO.	最大扭矩 TORQUE MAX	电压 VOLTS	最大电流 CURRENT MAX	产品总重 RETARDER WEIGHT	气隙 K AIR GAP	适装车辆 VEHICLE GVW	外形尺寸 DIMENSION DxHxW
KMZ35	3500N.m	24V	165A	410Kg	1.4~1.8mm	32~48T	622x640x384mm
KMZ38	3800N.m	24V	175A	415Kg	1.4~1.8mm	35~55T	622x640x384mm



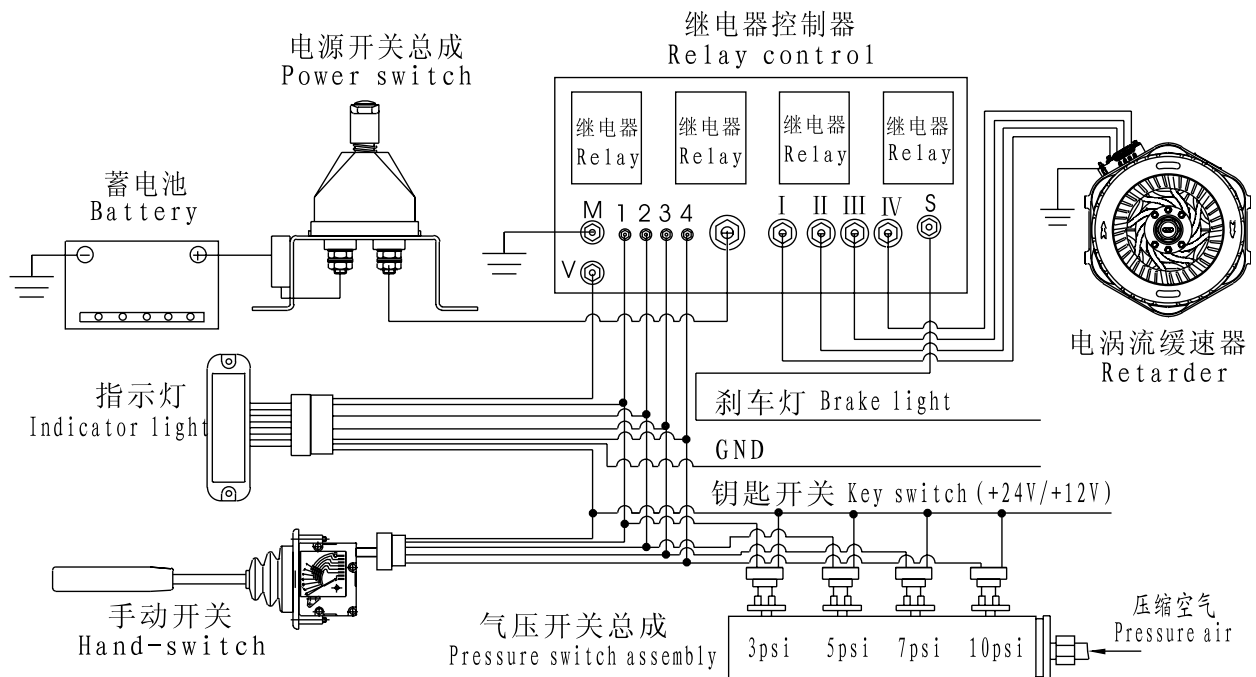
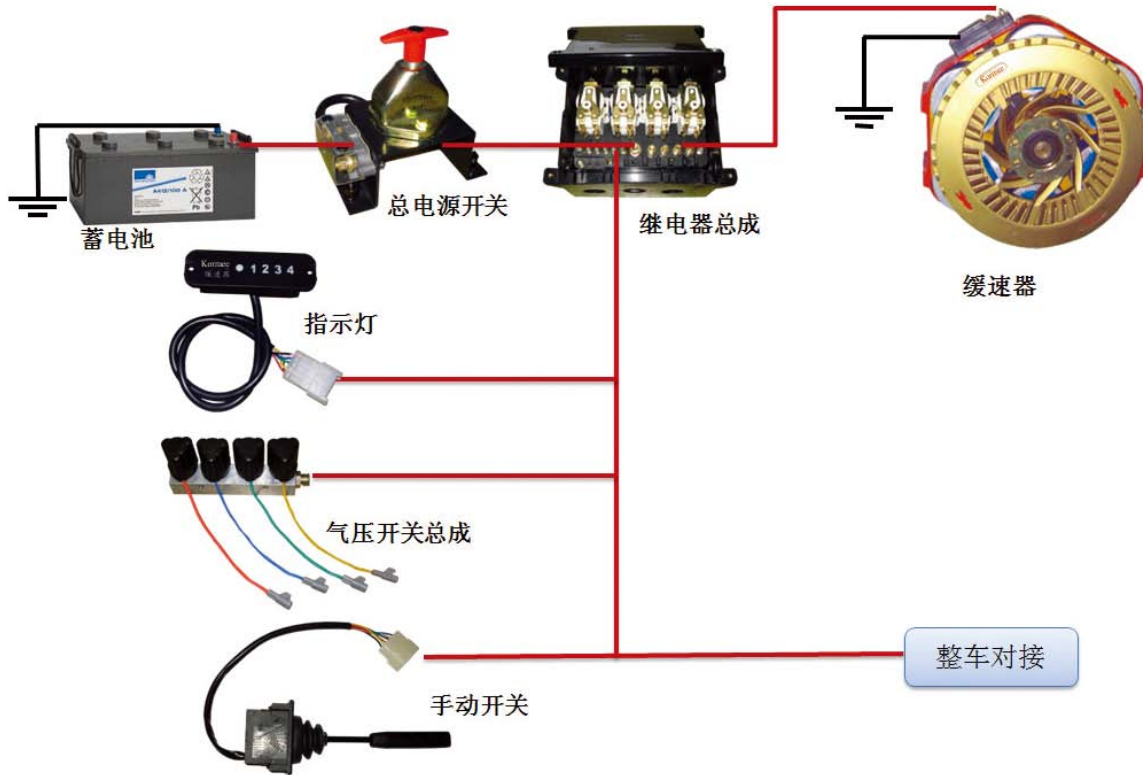
型号 NO.	法兰类型 FLANGE TYPE	适用缓速器 APPLICATION
3524 138 017 1	D	KMZ38



说明 EXPLAIN

本控制系统是电涡流缓速器用于载重卡车的最基本的控制系统，它只有手动控制功能，主要适用于 KMZ 系列电涡流缓速器。

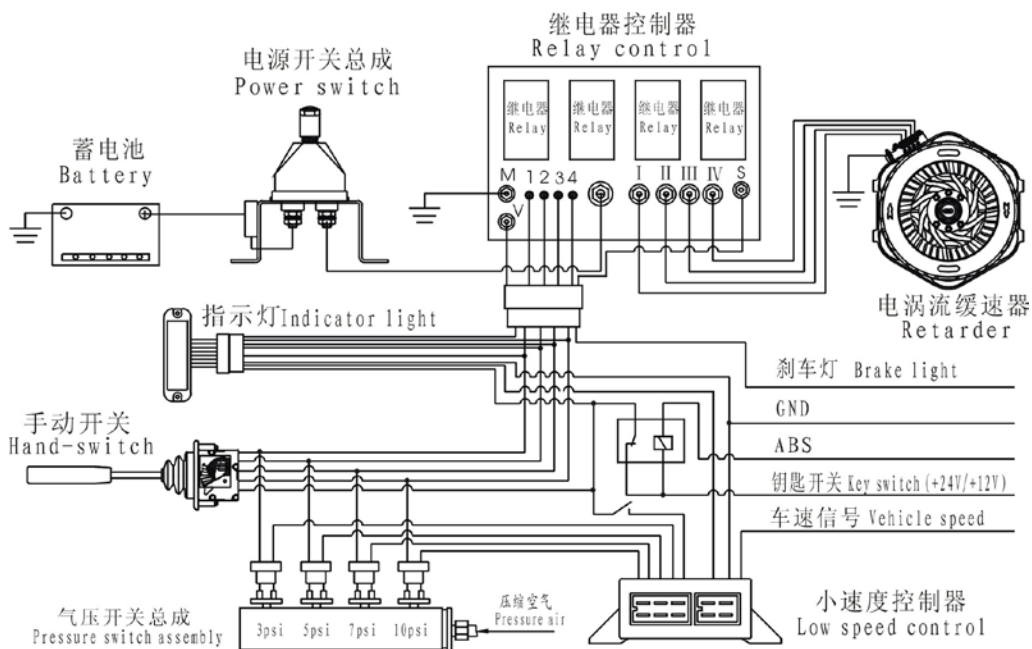
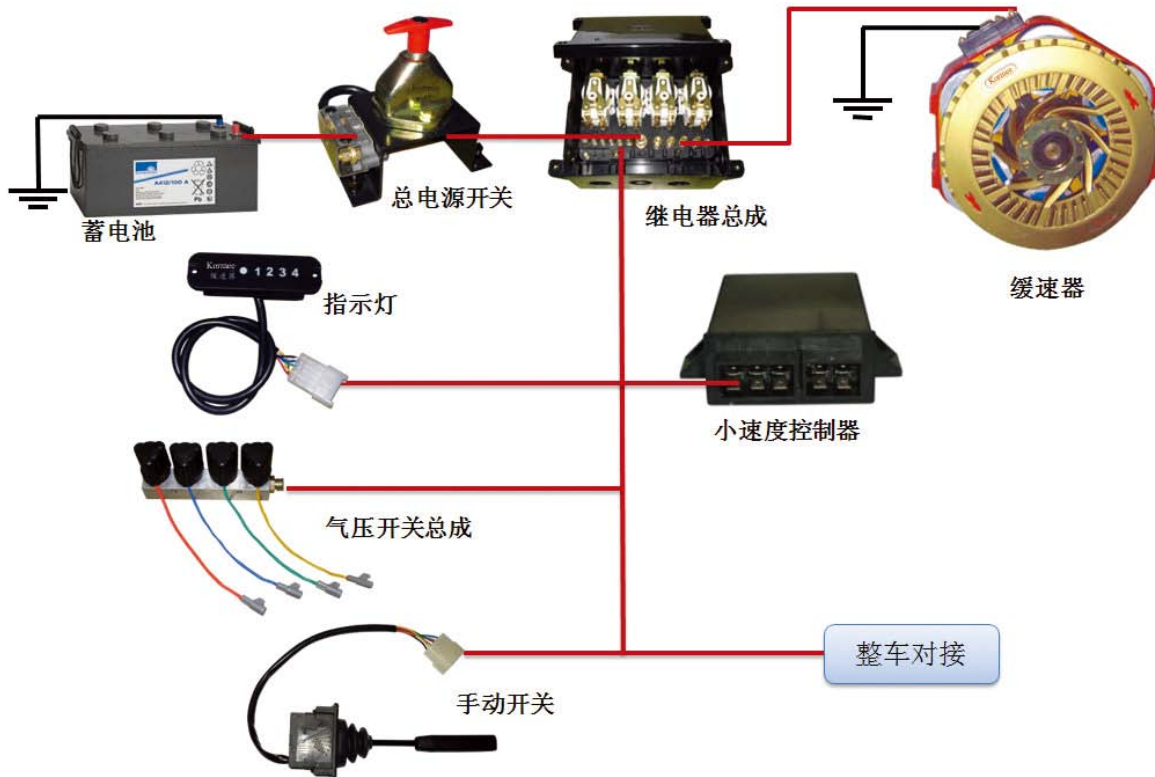
The control systems is a base systems of electric retarder which application on motor truck . It has only a function by hand-switch control , suit for the KMZ series electric retarder .



说明 EXPLAIN

本控制系统是电涡流缓速器用于客车的最基本的控制系统，它有手动控制功能，也有脚控制功能，主要用于 KMZ 系列产品。

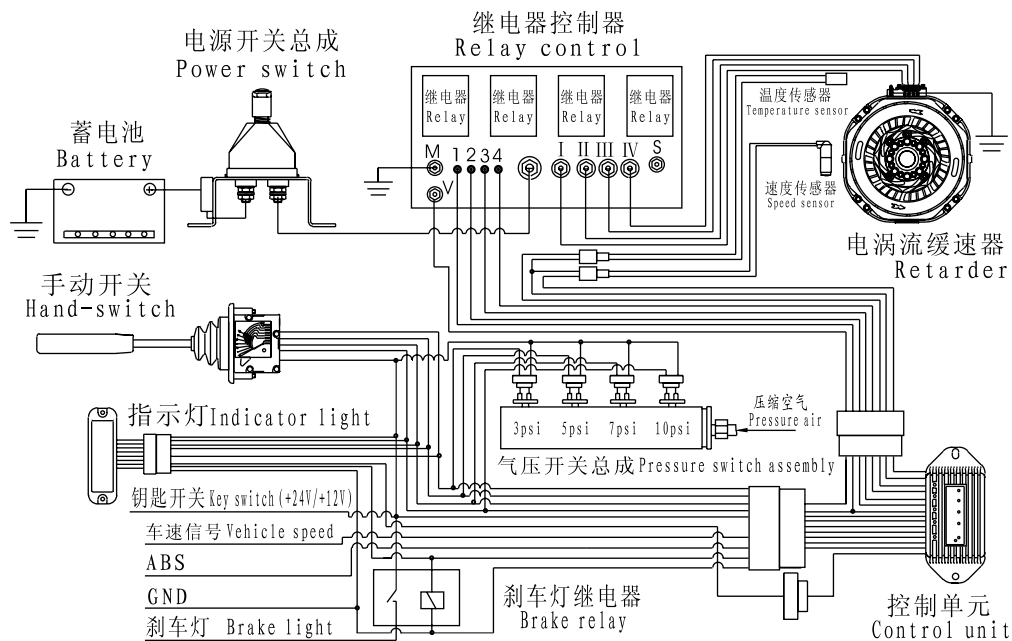
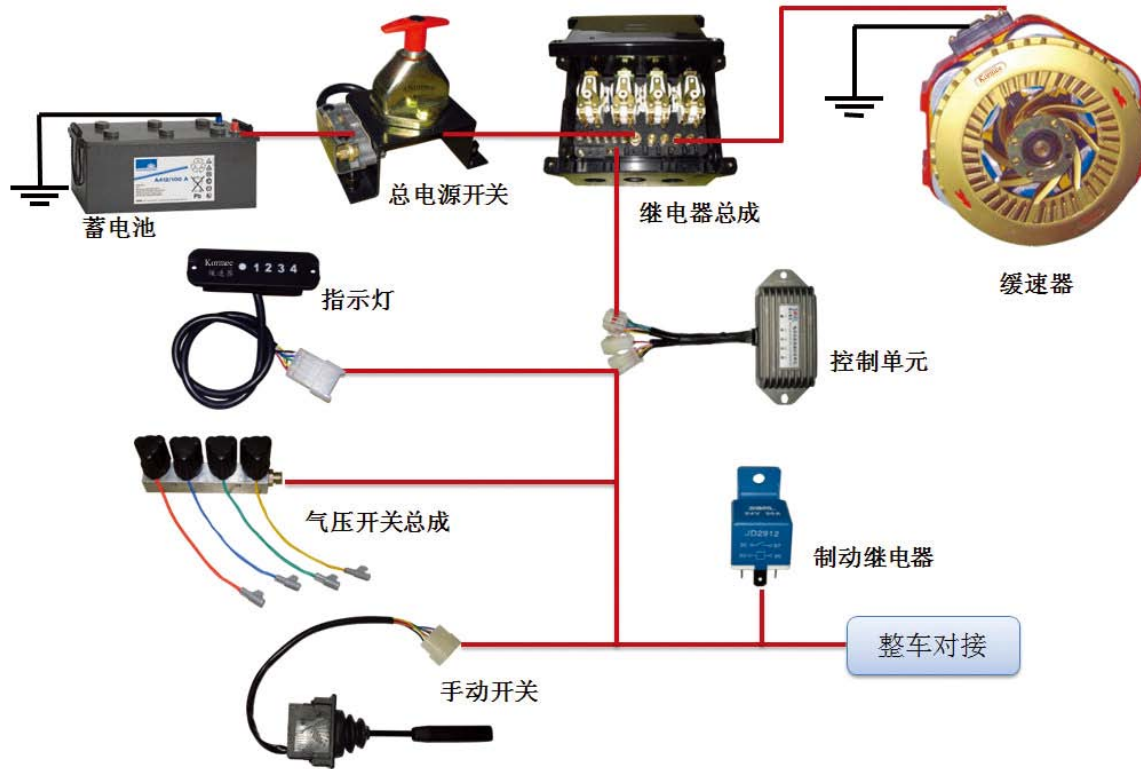
The control systems is a base systems of electric retarder which application on passenger car . It has not only the function by hand control but the function by foot control, suit for the KMZ series electric retarder .



说明 EXPLAIN

本控制系统主要有手动控制功能、脚控制功能、ABS 联动功能、脚控制低速关断功能、主要用于 KMX 和 KMT 系列产品，车速信号一般取自里程表信号。

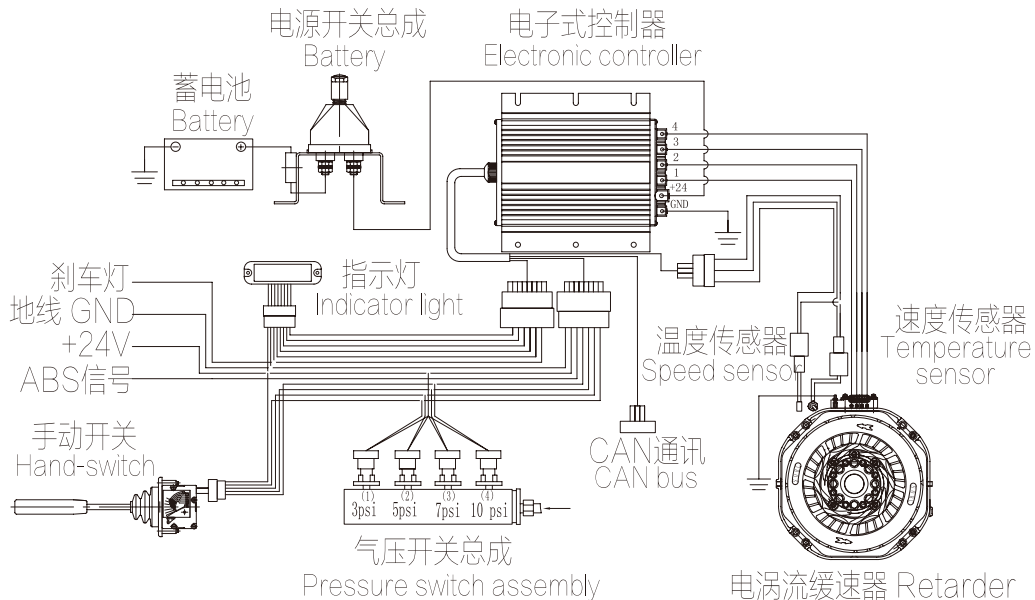
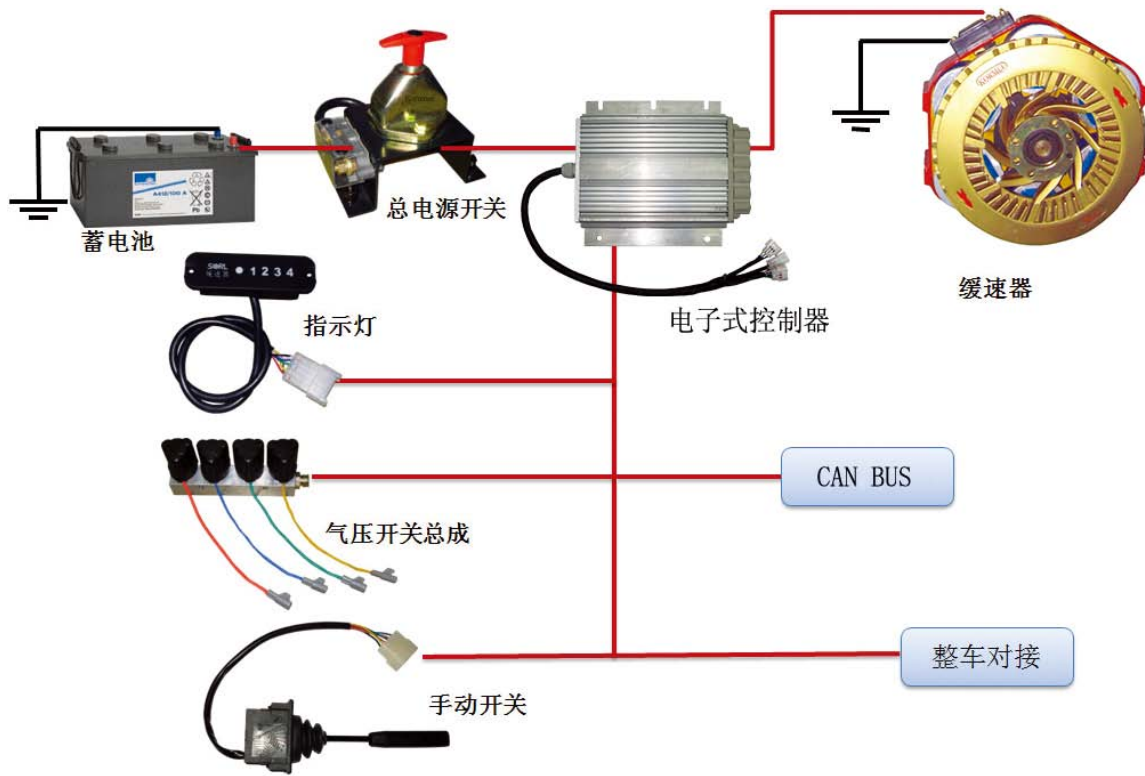
The control systems has the function by hand control , the function by foot control, the function by ABS linkage, the function which foot control with low speed no work, suit for the KMX and KMT series electric retarder.The speed signal can been pick-up from the vehicle odometer.



说明 EXPLAIN

本控制系统主要有手动控制功能, 脚控制功能, 还有 ABS 联动功能, 低速不工作功能, 高温报警功能, 主要用于 KMX 和 KMT 系列产品。低速信号可从整车提取, 也可从缓速器本身提取。

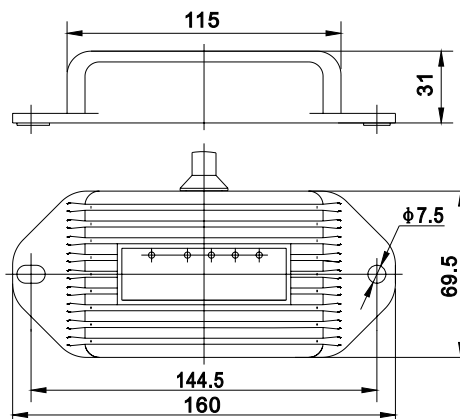
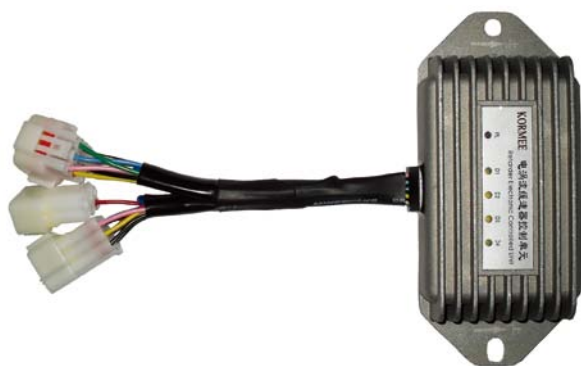
The control systems has the function by hand control, the function by foot control, the function with ABS, the function which low speed no work and the function which high temperature give an alarm , suit for the KMX and KMT series electric retarder . The low speed signal can be pick-up from the vehicle odometer or the rotor of the electric retarder;£



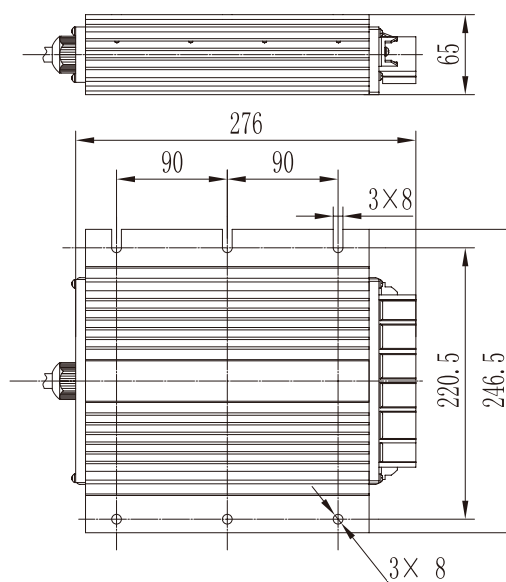
说明 EXPLAIN

本控制系统是电涡流缓速器功能最全的控制系统，它有手动控制功能，脚控制功能，ABS 联动功能，低速不工作功能，高温报警功能；还有油门控制功能，排气阀控制控制，CAN 通讯。主要用于 KMX 和 KMT 系列产品。低速信号可从整车提取，也可从缓速器本身提取。

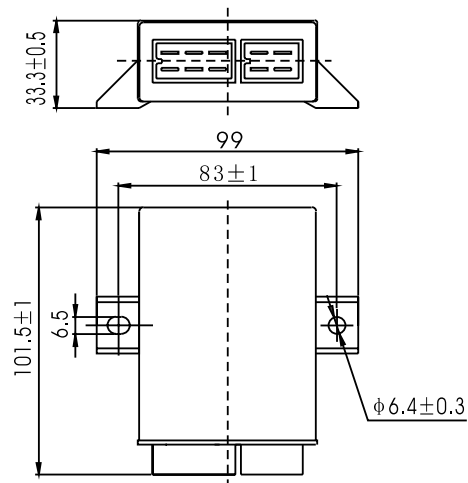
The control systems is a multifunctional systems of electric retarder which application on passenger car . It has the function by hand control, the function by foot control, the function with ABS, the function which low speed no work, the function which high temperature give an alarm , the function which Exhaust brake Control, the function which Accelerator Control and the function which CAN BUS.suit for the KMX and KMT series electric retarder . The low speed signal can be pick-up from the vehicle odometer or the rotor of the electric retarder.


控制单元 **CONTROL UNIT**

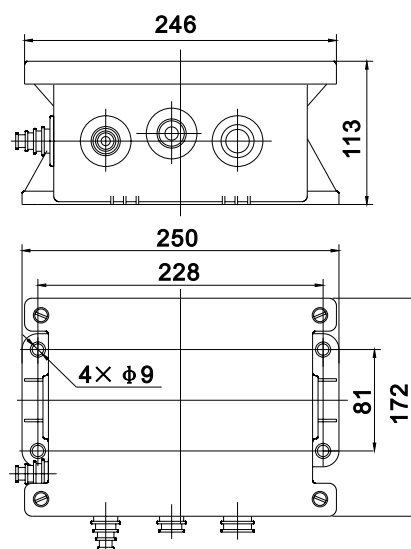
型号 NO.	额定电压 VOLT	输出功率 OUTPUT POWER	备注 COMMENT
3524 007 010 0	24V	48W	插座 /socket:DJ7081-6.3-20 DJ7102Y-2.2-20
3524 007 200 0	12V	24W	
3524 007 008 0	24V	48W	插座 /socket:DJ7091-2.3-10 DJ7091-2.3-20 DJ7062-2.3-10


电子式控制器 **ELECTRONIC CONTROLLER**

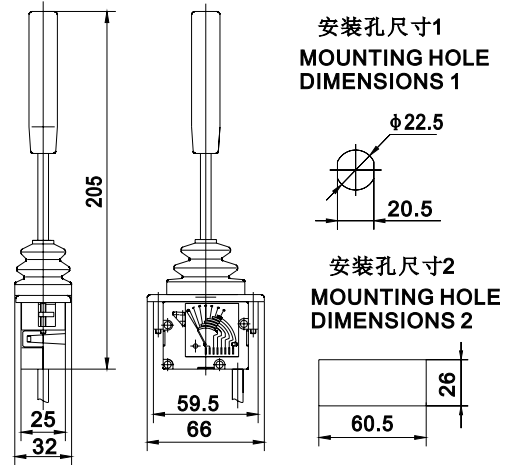
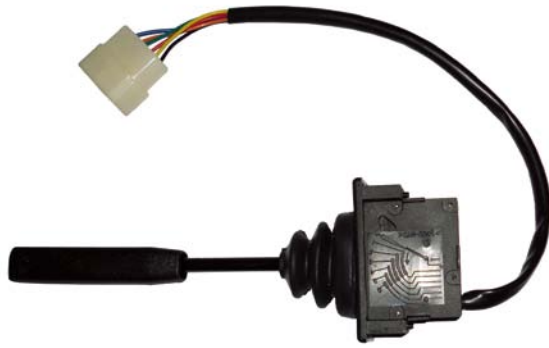
型号 NO.	额定电压 VOLT	额定电流 RATING CURRENT	备注 COMMENT
3524 001 301 0	24V	4x50A	插座 /socket:DJ7091-2.3-11 DJ7091-2.3-21 DJ7041-2.3-11 DJ7041-2.3-21


低速控制器 **LOW SPEED CONTROL**

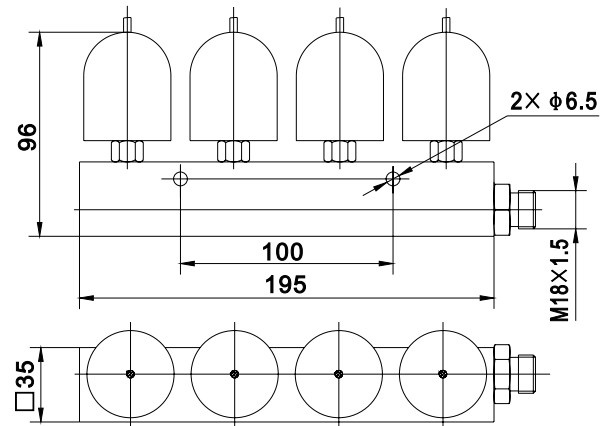
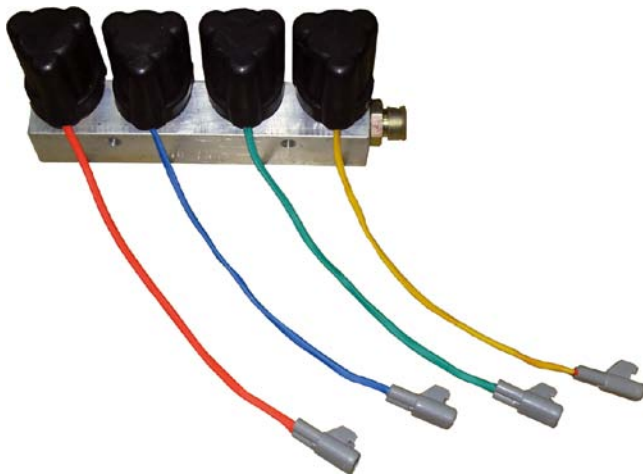
型号 NO.	额定电压 VOLT	输出功率 OUTPUT POWER	备注 COMMENT
3524 007 001 0	24V		速度信号最大值 / VOL MAX > 4V, 频率 / Fre > 5Hz, 启动输出


继电器控制器 **RELAY CONTROL**

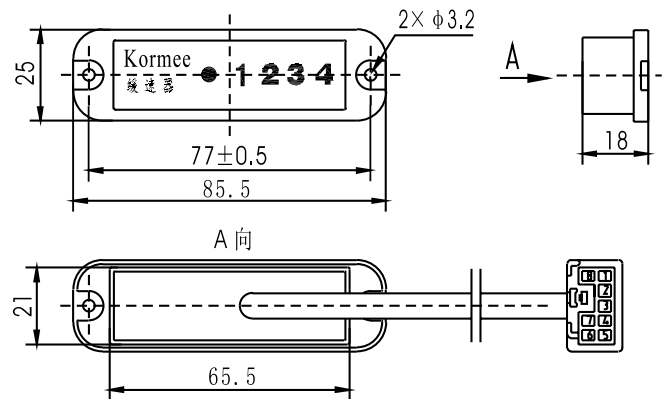
型号 NO.	额定电压 VOLT	额定电流 RATING CURRENT	备注 COMMENT
3524 001 002 0	24V	4x60A	控制电流 Control Current < 2A
3524 001 200 0	12V	4x60A	控制电流 Control Current < 2A


手动开关 **HAND-SWITCH**

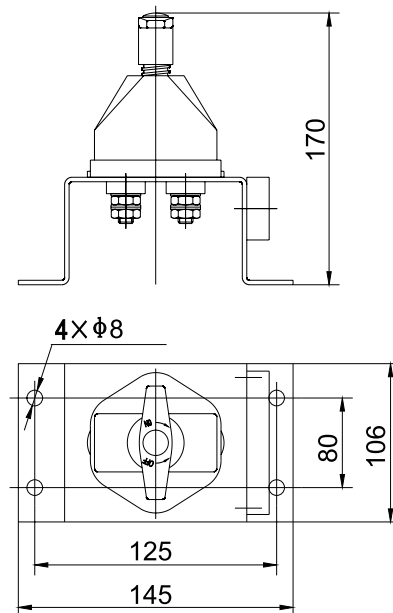
型号 NO.	档位设置 STAGE SETUP	备注 COMMENT
3524 002 009 0	4 STAGE	接口 /PIN: DJ7061-6.3-10


气压开关总成 **PRESSURE SWITCH ASSEMBLY**

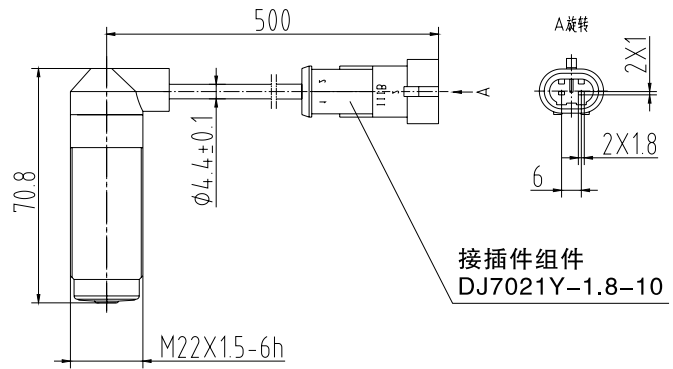
型号 NO.	档位设置 STAGE SETUP	导通压力 START PRESSURE	备注 COMMENT
3524 003 003 0	4 STAGE	3psi ,5psi 7psi ,10psi	接口 /PIN: DJ7025Y-2.2-10


指示灯
RETARDER INDICATOR LIGHT

型号 NO.	额定电压 VOLT	档位设置 STAGE SETUP	备注 COMMENT
3524 005 003 0	24V	4 STAGE	接口 /PIN: DJ7081-2.3-10
3524 005 203 0	12V	4 STAGE	


电源开关总成
POWER- SWITCH

型号 NO.	额定电压 VOLT	额定电流 RATING CURRENT	备注 COMMENT
3524 006 005 0	24V	300A(CONT.) 1500A(INT.)	带 150A 保险



缓速器传感器 RETARDERS SENSOR

型号 NO.	描述 DESCRIPTION	技术要求 SPECIFICATIONS
3550 399 001 0	4 STAGE	应用温度范围 /temp range of cable ~-40℃ ~+220℃ 导线规格 /cable: 2x0.5mm ² 电阻值 /resistance value: 1050 ± 100Ω (20℃) 感应电压 /induced voltage: Vpp ≥ 1.8V (间隙在 5.2 ^{+0.2} mm)(clearance between 5.2 ^{+0.2} mm)